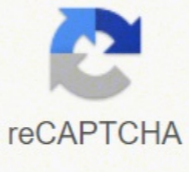




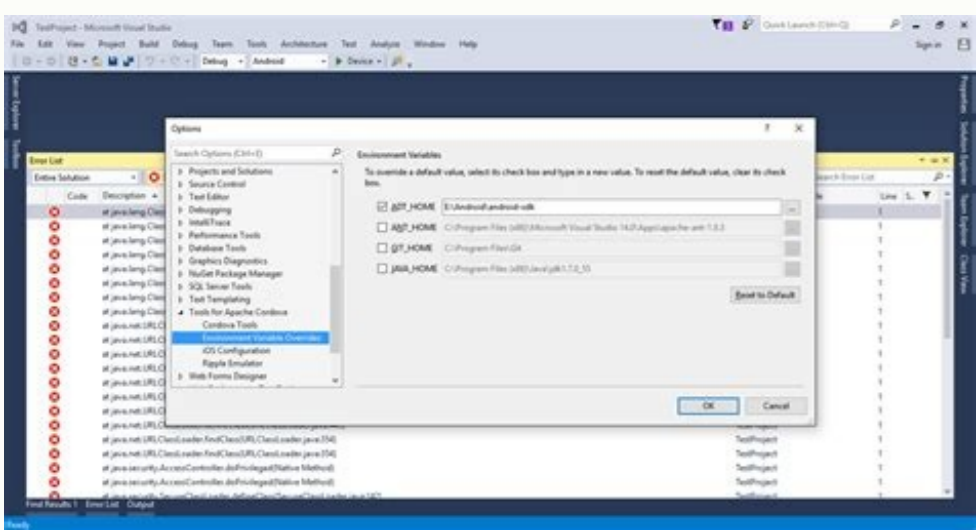
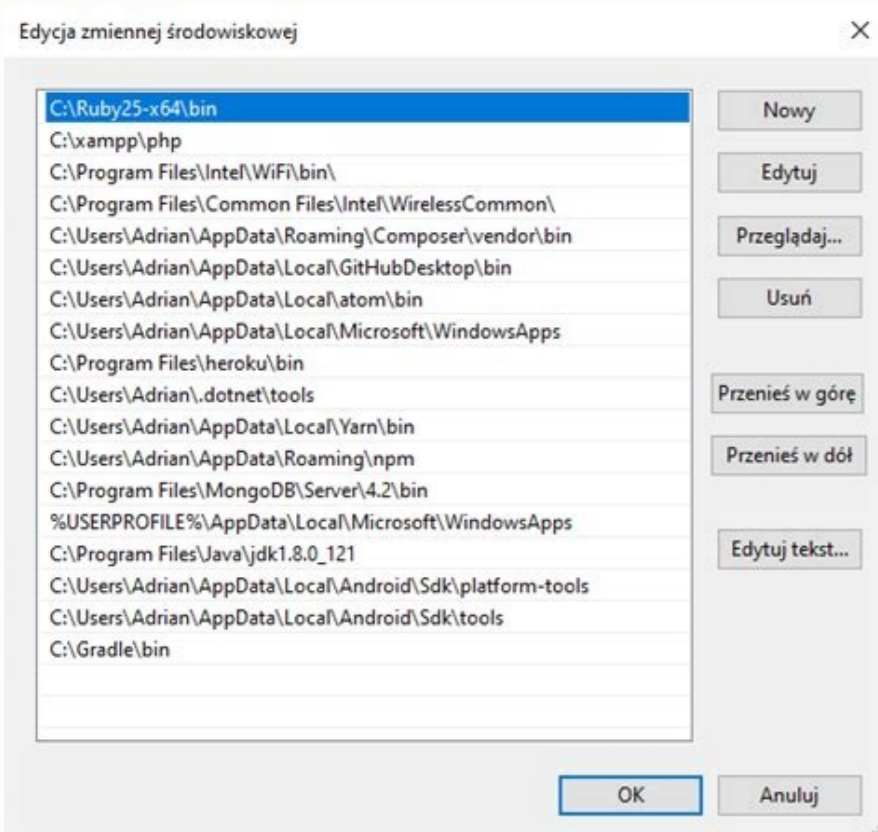
I'm not robot



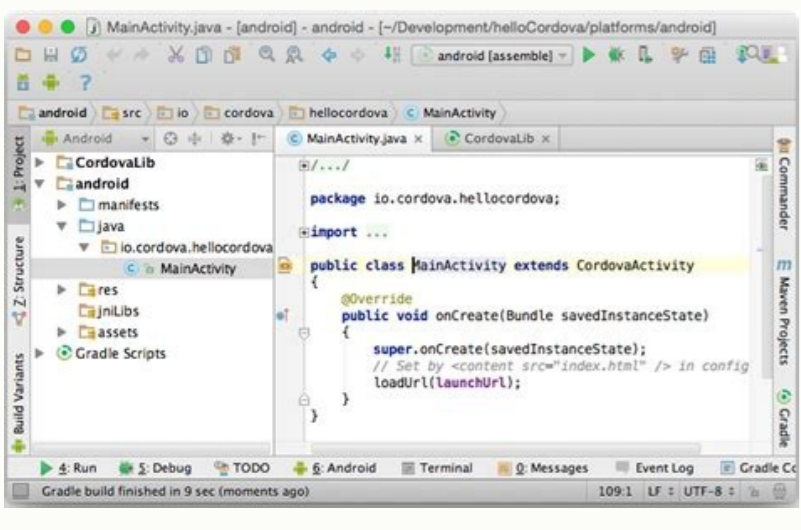
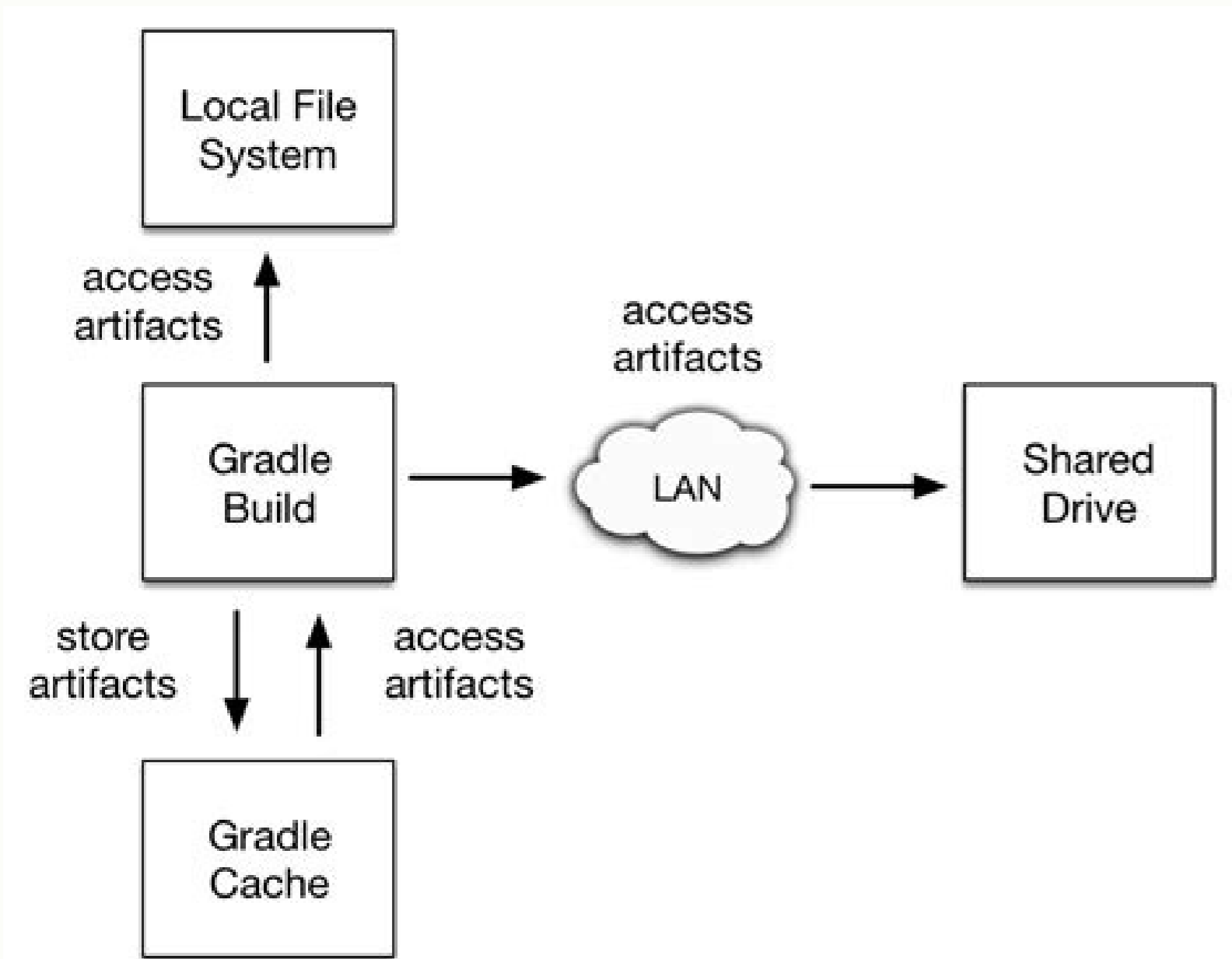
reCAPTCHA

Open

Android- sdk version check failed cordova



Android Version	API Level	Count	Status
Android 10.0+ (R)	30	3	Installed
Android 10.0 (Q)	29	6	Installed
Android 9.0 (Pie)	28	6	Installed
Android 8.1 (Oreo)	27	3	Installed
Android 8.0 (Oreo)	26	2	Installed
Android 7.1.1 (Nougat)	25	3	Installed
Android 7.0 (Nougat)	24	2	Installed
Android 6.0 (Marshmallow)	23	3	Installed
Android 5.1 (Lollipop)	22	2	Installed
Android 5.0 (Lollipop)	21	2	Installed
Android 4.4W (KitKat Wear)	20	2	Not installed
Android 4.4 (KitKat)	19	4	Installed
Android 4.3 (Jelly Bean)	18	3	Not installed
Android 4.2 (Jelly Bean)	17	3	Not installed
Android 4.1 (Jelly Bean)	16	5	Not installed
Android 4.0.3 (IceCreamSandwich)	15	6	Not installed
Android 4.0 (IceCreamSandwich)	14	4	Not installed
Android 3.2 (Honeycomb)	13	1	Not installed
Android 3.1 (Honeycomb)	12	3	Not installed
Android 3.0 (Honeycomb)	11	2	Not installed



Installing cordova-plugin-local-notification for android android-sdk version check failed. Android-sdk version check failed cordova.

It's easy and fun to start with the Evothings studio. One thing to do is to inspect all the environment variables. To verify that you already have the JDK installed, type this in the command line: `JAVAC -VERSION`. If you do not have JDK installed, continue as follows: Download the latest version of Java SE JDK (SE = Edici3 n est) from Oracle: www.oracle.com/technetwork/java/javase/downloads/. You are now ready to test the installation. To develop Android apps, you must install the Android SDK, and also Java, if it is not already installed on your machine. When done, click on the 'OK' button. Using the default selections should be fine, but take a note of the directory where you install the JDK. Select the Advanced tab, then click the 'OK' button in Environment Variables. Install CA rdova. To test the installation, open a command window (be sure to open a new command window to obtain the updated path configuration performed by the Node.js installation) and type: `node -version` if version number is displayed, node.js is installed and working! Install git. In the Name Type field variable: java Home In the Field Variable field Enter the path to the directory where the JDK is installed, without the Semicol3 n and the Subdirectory / Bin, for example: `C:\Program Files\Java\jdk1.8.0_11`. Click the 'OK' button. This document describes how to install Apache CA rdova and the Android SDK on a Windows machine. Download now and get up and running in 5 minutes! You can do this from a command window after updating environment variables to make updated values available. You will need to add this to the route at a later step. Download the installer from: go ahead, run the installation. odneibircse odneibircse avodr3C ed n3Aicalatsni al eburP AVODROC g- latsni MPN .ralatsni arap sodnamoc ed anatev al ne etneugis ol abircse .adip3r n3Aisave ed ojabart ed ojufl ne noc abodr3C ed oteoyrp us rasu om3Ac a ozatsiv nu ahcE -version If you see the version number, you have properly installed Apache C3rdova! The Android SDK needs the Java Development Kit (JDK) that will be installed, version 1.7 or later. Git is a version control system, which is used by C3rdoba behind the scenes. (If there is no route entry in the list, click on the new button to create one). At the end of the value of the field variable, add a point and comma followed by the path to the BIN directory of the JDK installation. It is recommended to use the default configuration. Close any open command window and open a new command window and write: `Javac -Version`. If you see a version number that you have finished with the JDK installation! If it is jammed, see the documentation of the respective websites for Cordova, Java and Android. Please, let us know if there is something missing (email: info@evothings.com). Open the control panel, click System and Safety, click System, click Change Settings, which will open the System Properties window. The default configuration is recommended. Here is an example (keep in mind that this must be the actual route used for the installation on its machine) ; C:\Program Files\Java\jdk1.8.0_11\BIN An easy way to do this is to prepare the route to add in a text editor, then pore at the end of the input field. This shows the system route: Eco% Route% here is how to inspect the value of Java Home: ECHO% Java Home% The next step is to create and build a C3rdoba project. Care has been taken when writing this document to include all the necessary essential steps to be established with a successful installation. Follow these steps to install C3rdova: Install node.js. If you do not know what version, find out using the control panel by selecting "System and Safety" and then "System", where avodroc avodroc IE KDJ le ;Aratisecen ,etneicufis se on JERJ[ava] ed n3Aicuceje ed onrone le euq atneoc ne agneT .ocop -46 o stib 23 ed se swodniW ed n3Aisrev us is ecid euq "ametsis led opit" le .satneimarreh .satneimarreh riurtsnoc y SDKS ed n3Aicalatsni al noc aiverp aicneirepxe us ed odneidneped ,opneit n3Aglar amot odep euq ojeipmoc etnatsab oseocorp nu se etsE .odagraced rodalatsni led ovhiera le etuceje y ayaV .osap remirp omoc esralatsni ebed euq .s3edon amrofatalp al ne atuceje es avodroc .)ratidE n3Atob le odnasu rolav us razilautca abed euq elbisop se .atsil al ne ;3tse is yt etneserp ;3tse on is emoH .ava] elbairav al eugerga ,n3Aicauitnoc A sgnihovE ed orof le ne aduya ridep a odineveib se n3AibmaT .adanimreterp amrof ed azilaeer euq ,atur al ed onrone ed elbairav al a esragerga ebed s3edon .sagraced ed atsil al rev arap ES ava] ed agraced al ne cilc agaH .stib 46 ed sanatnev eneit is "46X swodniW" y stib 23 ed sanatnev eneit is "68X swodniW" agraced al agnetbO .ratidE n3Atob le ne cilc agah y atur al enoicceles oirausu ed selbairav atsil al ne .abodr3C ed senoicacilpa rallorased lic;3f aes euq eah oidutS sgnihovE .onrone ed selbairav sal ed anatev al rarrac arap etnemaveun KO n3Atob le ne cilc agaH .)MPN(sodon ed setuqap ed rodartsinimda le odnazilitu alatsni es abodr3C .s3Am rednerpa arap abodr3C ed aAug al a ri .)REGANAMKDS(diordnA ed KDS satneimarreh sal etnemelpmis o oiduts diordnA ralatsni etrne n3Aicpo al eneit ,diordnA ed KDS le araP .moc.mcs-tig/ptth :edsed elatsni e eugracedD .oveun3Atob le ne cilc agaH .KDJ le riulcni arap atur us eclautca ,n3Aicauitnoc A .diordnA arap amrofatalp ed aAug au eneiT

